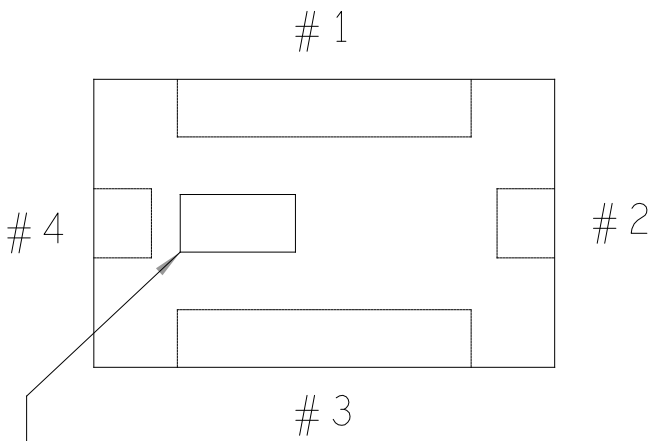


REVISIONS			
REV	DESCRIPTION	DATE	APPROVED
A	INITIAL RELEASE	03OCT19	T. CABILDO
B	AS PER ECR-095519	15JUL20	T. CABILDO
C	AS PER ECR-100230	10DEC20	T. CABILDO
D	AS PER ECR-103775	05OCT21	Z. ARCEO
E	AS PER ECR-105391	23NOV21	Z. ARCEO
F	AS PER ECR-111800	14DEC22	Z. ARCEO
G	AS PER ECR-113680	31MAR23	Z. ARCEO

ASSEMBLY NOTES:

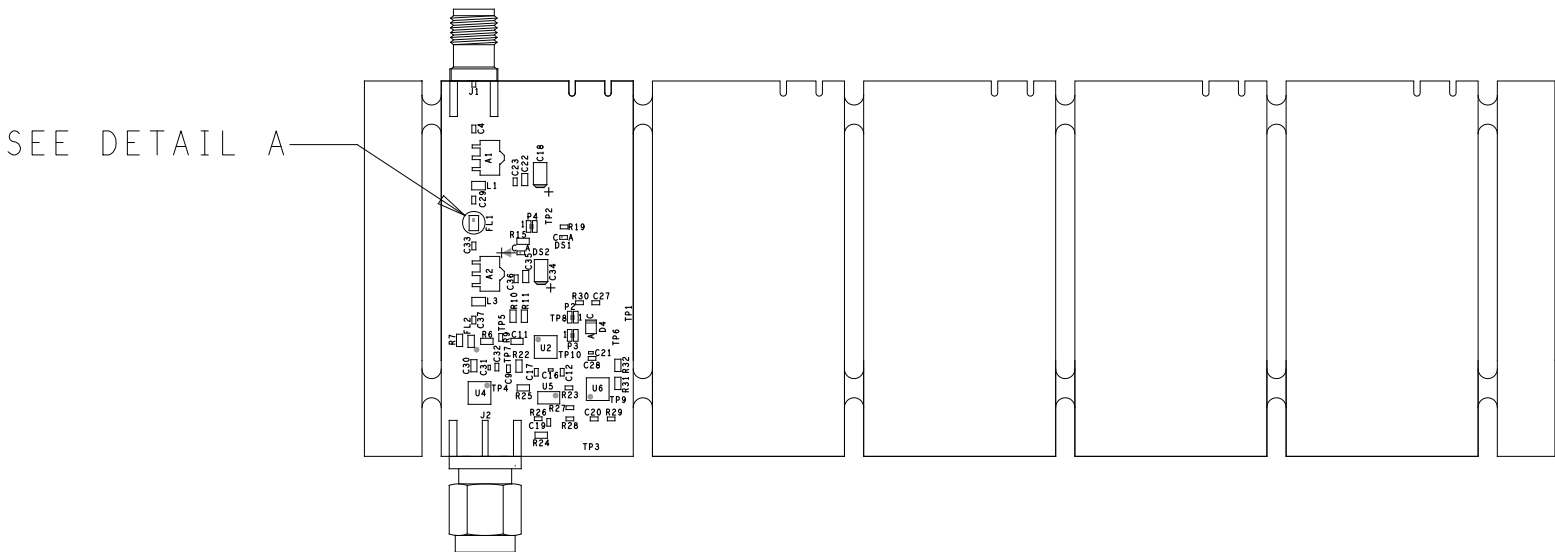
- BOARD ACCEPTABILITY PER ANALOG DEVICES, INC. SPECIFICATION TST00119 (LATEST REVISION).
- REPAIRS PER IPC-7711/21(LATEST REVISION) ARE ALLOWED.
- THIS BOARD CONTAINS ELECTROSTATIC DISCHARGE SENSITIVE DEVICES.
- PARTS INDICATED BELOW SHOULD BE MOUNTED MANUALLY:
A. J1, E049020, CONN-PCB SMA END LAUNCH JACK FLAT TAB FLANGE FOR 1.62MM PCB, 60312202114513
B. J2, E049019, CONN-PCB SMA END LAUNCH PLUG ROUND FOR 1.62MM PCB, 60314202124525
- RoHS COMPLIANCE: ASSEMBLY VENDOR SHOULD ASSURE COMPLIANCE WITH LEAD-FREE AND RoHS PCB ASSEMBLY STANDARDS (EU RoHS DIRECTIVE 2002/95/EC).
- ASSEMBLY VENDOR MUST SOLDER SHORT ON DEFAULT POSITION PIN 1 & 2 OF COMPONENT P2, P3 AND P4.
- ASSEMBLED BOARDS TO BE SHIPPED SINGULATED.
- SMOOTHEN EDGES AND FREE FROM BURRS AFTER DEPANELIZATION PROCESS.

DETAIL A
SCALE: NONE




Note: Actual device has a mark near terminal #4 as shown.

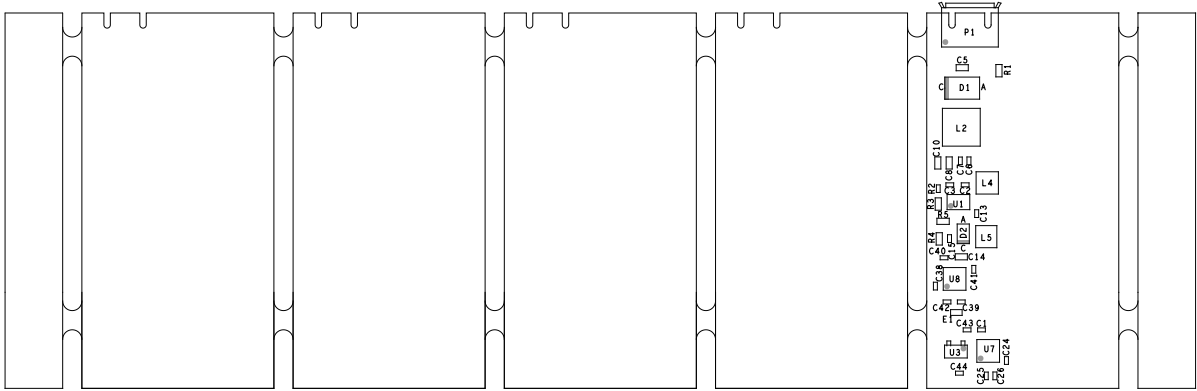
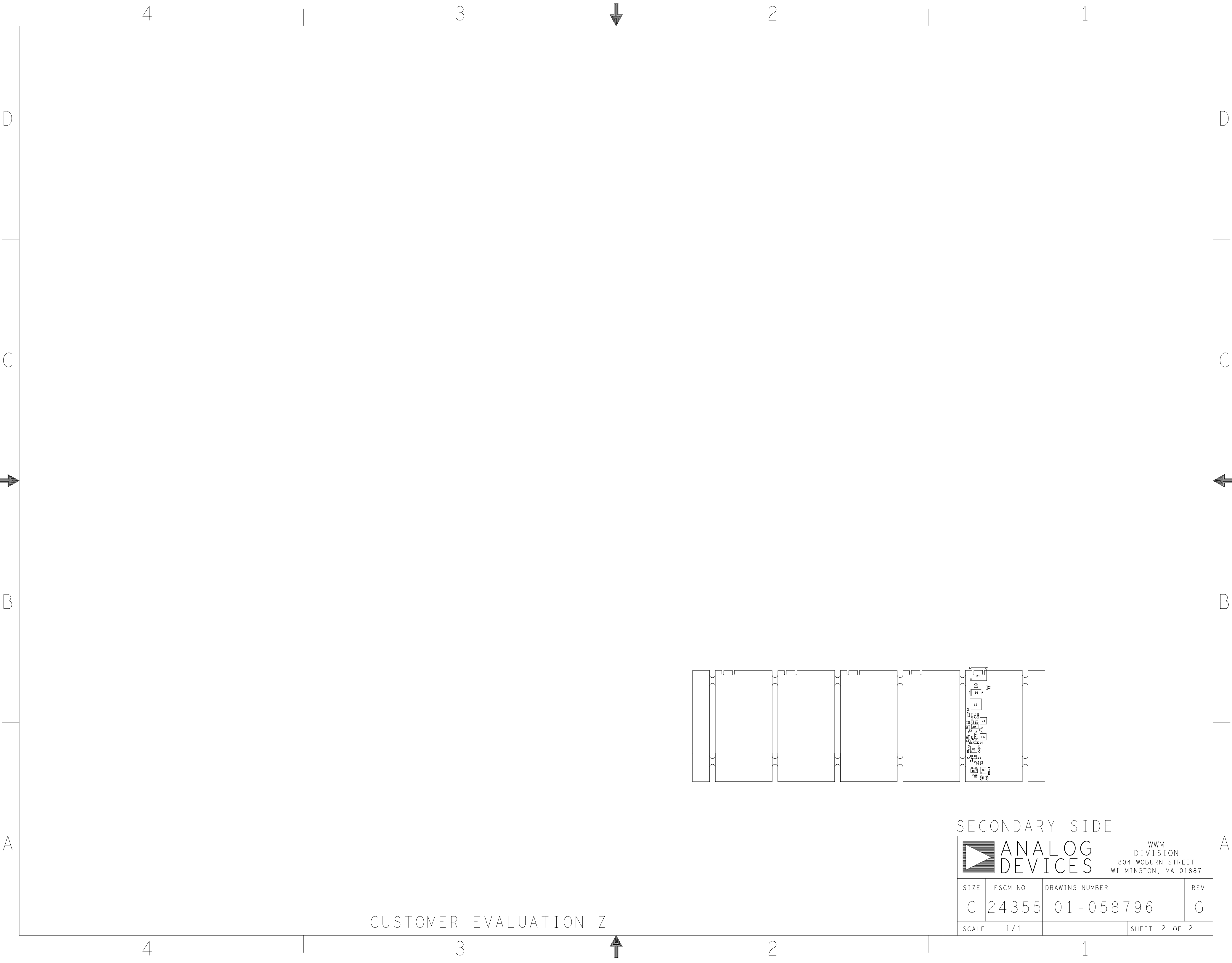
VIEWED FROM THE
PRIMARY SIDE



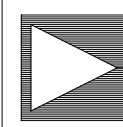
CUSTOMER EVALUATION Z

PRIMARY SIDE

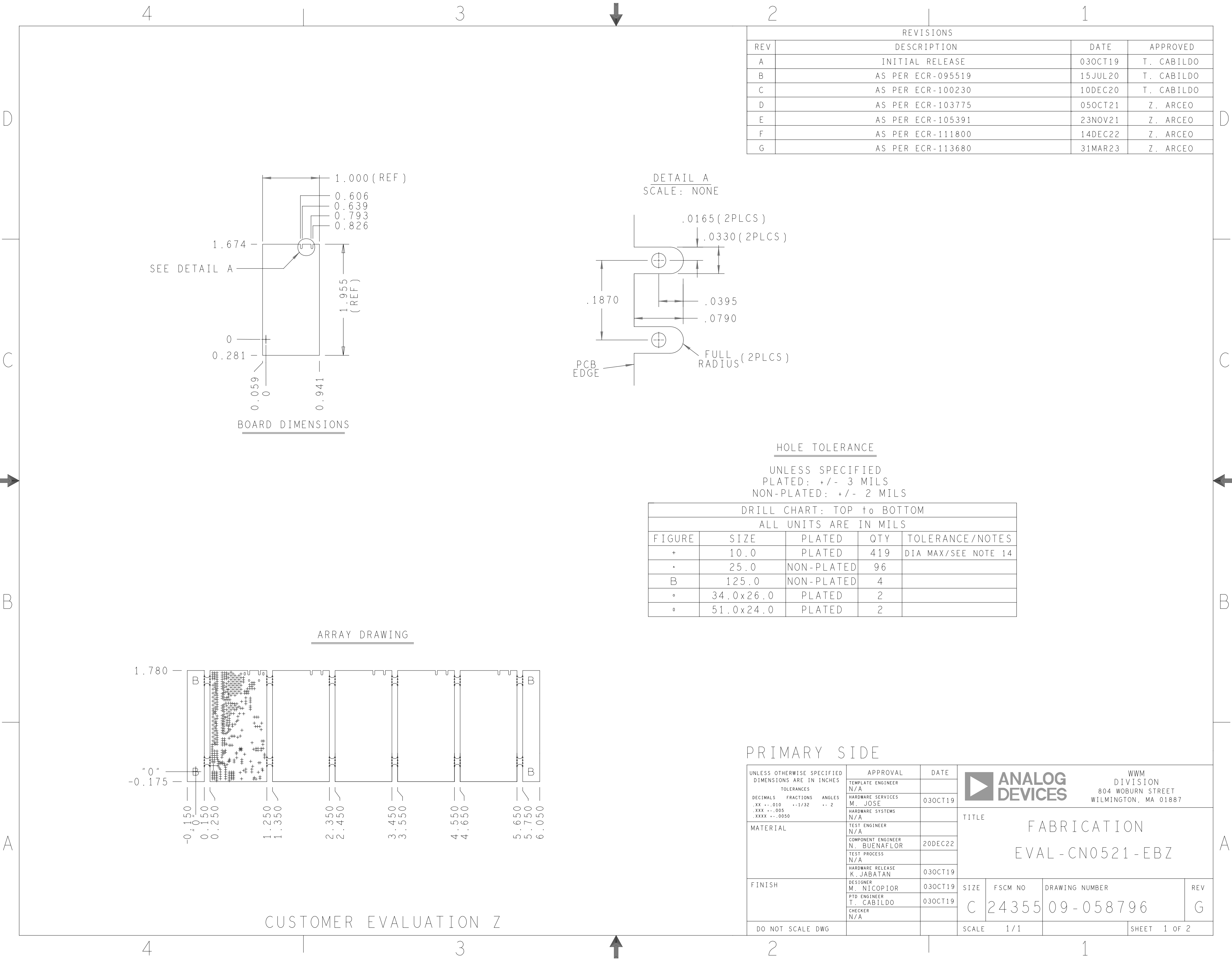
UNLESS OTHERWISE SPECIFIED DIMENSIONS ARE IN INCHES TOLERANCES DECIMALS FRACTIONS ANGLES .XX -.010 --1/32 -- 2 .XXX -.005 .XXX -.0050		APPROVAL TEMPLATE ENGINEER N/A	DATE 03OCT19	 WWM DIVISION 804 WOBURN STREET WILMINGTON, MA 01887			
MATERIAL		HARDWARE SERVICES M. JOSE					
FINISH		HARDWARE SYSTEMS N/A		TITLE ASSEMBLY EVAL - CN0521 - EBZ			
DO NOT SCALE DWG		TEST ENGINEER N/A		SIZE C	FSCM NO 24355	DRAWING NUMBER 01-058796	REV G
		COMPONENT ENGINEER N. BUENAFLOR	20DEC22				
		TEST PROCESS N/A					
		HARDWARE RELEASE K. JABATAN	03OCT19				
		DESIGNER M. NICOPOR	03OCT19				
		PTD ENGINEER T. CABILDO	03OCT19				
		CHECKER N/A					
				SCALE 1/1			SHEET 1 OF 2



SECONDARY SIDE

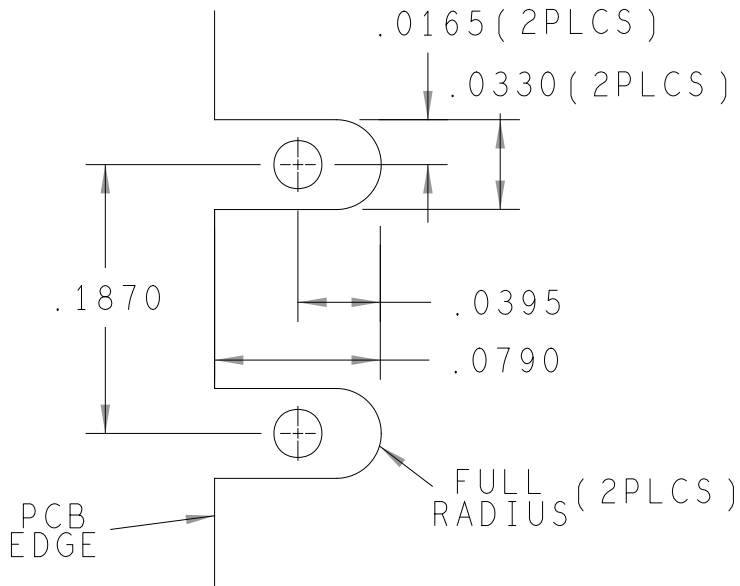
		ANALOG DEVICES		WWM DIVISION 804 WOBURN STREET WILMINGTON, MA 01887	
		SIZE	FSCM NO	DRAWING NUMBER	REV
C		24355	01-058796		G
SCALE		1 / 1		SHEET 2 OF 2	

CUSTOMER EVALUATION Z



REVISIONS			
REV	DESCRIPTION	DATE	APPROVED
A	INITIAL RELEASE	03OCT19	T. CABILDO
B	AS PER ECR-095519	15JUL20	T. CABILDO
C	AS PER ECR-100230	10DEC20	T. CABILDO
D	AS PER ECR-103775	05OCT21	Z. ARCEO
E	AS PER ECR-105391	23NOV21	Z. ARCEO
F	AS PER ECR-111800	14DEC22	Z. ARCEO
G	AS PER ECR-113680	31MAR23	Z. ARCEO

DETAIL A
SCALE: NONE

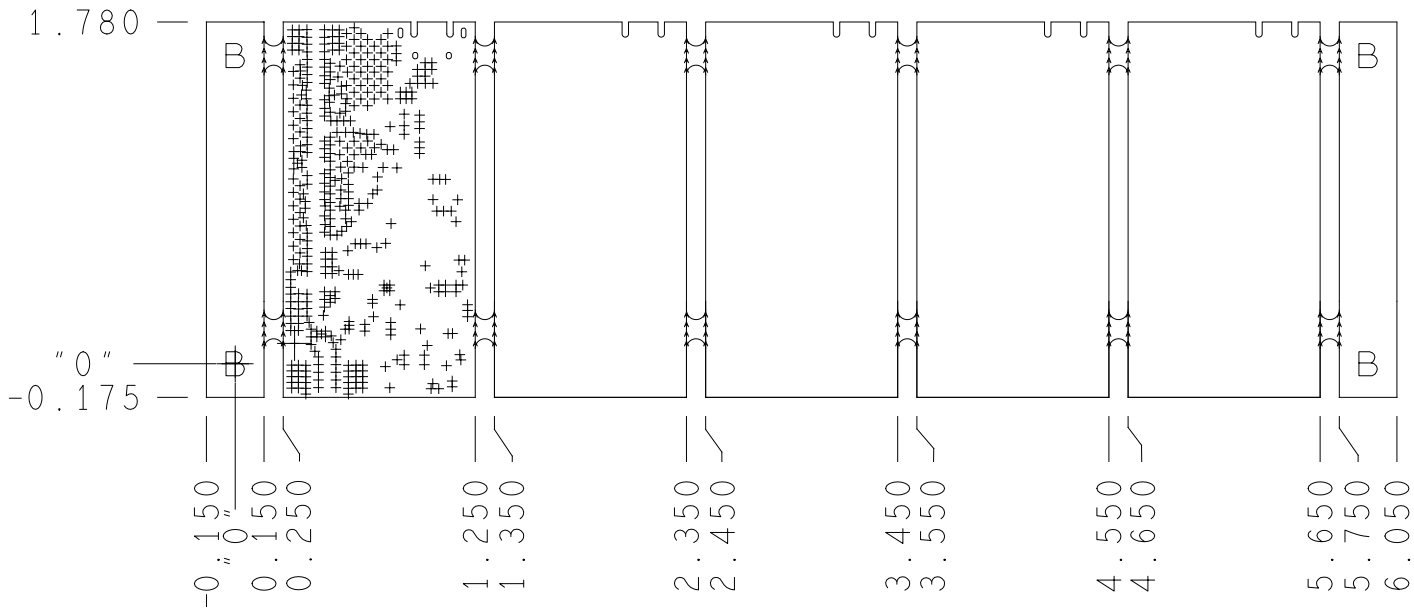


HOLE TOLERANCE

UNLESS SPECIFIED
PLATED: +/- 3 MILS
NON-PLATED: +/- 2 MILS

DRILL CHART: TOP to BOTTOM				
ALL UNITS ARE IN MILS				
FIGURE	SIZE	PLATED	QTY	TOLERANCE/NOTES
+	10.0	PLATED	419	DIA MAX/SEE NOTE 14
•	25.0	NON-PLATED	96	
B	125.0	NON-PLATED	4	
°	34.0x26.0	PLATED	2	
°	51.0x24.0	PLATED	2	

ARRAY DRAWING



CUSTOMER EVALUATION Z

PRIMARY SIDE

UNLESS OTHERWISE SPECIFIED DIMENSIONS ARE IN INCHES			APPROVAL		DATE		<div><div><div></div></div><div>ANALOG DEVICES</div></div> <div>WWM DIVISION 804 WOBURN STREET WILMINGTON, MA 01887</div>															
TOLERANCES			TEMPLATE ENGINEER N/A																			
DECIMALS	FRACTIONS	ANGLES	HARDWARE SERVICES M JOSE		03OCT19		TITLE FABRICATION EVAL - CN0521 - EBZ															
.XX .-.010	--1/32	-- 2	HARDWARE SYSTEMS N/A																			
.XXX .-.005																						
.XXXX .-.0050																						
MATERIAL			TEST ENGINEER N/A																			
			COMPONENT ENGINEER N. BUENAFLO		20DEC22																	
			TEST PROCESS N/A																			
			HARDWARE RELEASE K. JABATAN		03OCT19																	
FINISH			DESIGNER M. NICOPIOR		03OCT19		SIZE C															
			PTD ENGINEER T. CABILDO		03OCT19						FSCM NO 24355											
															DRAWING NUMBER 09 - 058796							
																			REV G			
DO NOT SCALE DWG							SCALE 1 / 1															
							SHEET 1 OF 2															

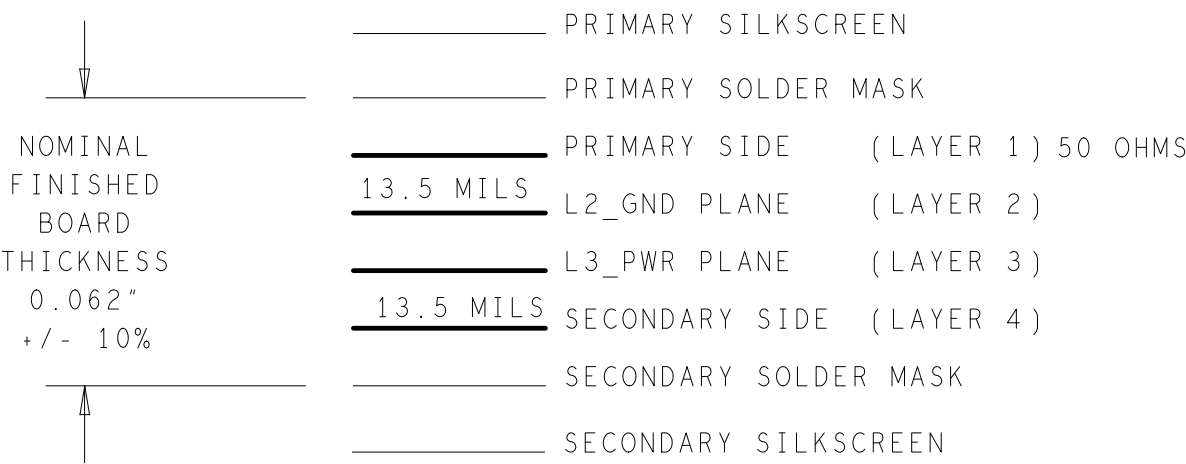
SPECIFICATIONS:

ROHS COMPLIANCE NOTE;	HOMOGENOUS MATERIALS IN THIS BOARD SHALL BE COMPLIANT THE EU RoHS DIRECTIVE 2002/95/EC
MATERIALS;	ALL LAMINATES AND BONDING MATERIALS SHOULD BE SELECTED FROM IPC-4101 OR IPC-4103, MINIMUM Tg>170degC, Td>300degC, U.L. RATING OF 94 V-0
MATERIAL FAMILY;	ISOLA370HR OR S1000-2 OR IT180 OR EQUIVALENT
CLADDING;	EXTERNAL LAYERS .5 OZ. COPPER, OVERPLATE TO 1.5 OZ. INTERNAL PLANE LAYERS 1 OZ. COPPER. NOTE: IF THE LAYER STACKUP CONFLICTS WITH THE ABOVE CLADDING SPECIFICATIONS THEN THE LAYER STACKUP SHALL TAKE PRECEDENCE.
SOLDER MASK;	SHALL BE LIQUID PHOTOIMAGEABLE (LPI) APPLIED ON BOTH SIDES OVER BARE COPPER OR GOLD AND SHALL MEET IPC-SM-840 (LATEST REV.) CLASS 3. COLOR BLUE.
SILK SCREEN;	SHALL BE PERMANENT NON-CONDUCTIVE EPOXY INK, COLOR: WHITE SYNTHETIC INKJET PRINTING ALLOWED FOR DENSE BOARDS, COLOR: WHITE
SURFACE FINISH;	ENIG (ELECTROLESS NICKEL/IMMERSION GOLD) PER IPC-4552 LATEST REVISION
INTENTIONAL SHORTS;	IF SUPPLIED DATA INCLUDES A FILE "READ_ME.2", THEN INTENTIONAL NET SHORTS EXIST. CUSTOMER REVIEW AND APPROVAL IS REQUIRED IF SUPPLIED DATA REPORTS ANY CONDITION THAT DOES NOT MATCH "READ_ME.2" FILE PROVIDED.
TEST REQUIREMENTS;	100% NETLIST ELECTRICAL VERIFICATION USING CUSTOMER SUPPLIED IPC-D-356 NETLIST FOR OPENS AND SHORTS WHEN "GERBER DATA" IS PROVIDED. THIS VERIFICATION ALSO REQUIRED FOR "ODB++" DATA PER EMBEDDED NETLIST.

REQUIREMENTS:

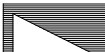
- REFER TO IPC-6010 SERIES (LATEST REV.), CLASS 2 FOR FABRICATION UNLESS OTHERWISE SPECIFIED.
- ACCEPTABILITY PER ANALOG DEVICES, INC. SPECIFICATION TST00115, (LATEST REVISION.)
- MODIFICATIONS TO THE ARTWORK ARE NOT ALLOWED WITHOUT WRITTEN AUTHORIZATION.
- HOLE PATTERN TOLERANCES FOR UNDIMENSIONED HOLES SHALL BE A DIAMETER OF 0.005 INCHES FROM THEIR TRUE POSITION.
- PLATED HOLE WALL THICKNESS SHALL NOT BE LESS THAN 0.001 INCH MINIMUM AVERAGE, WITH NO READING LESS THAN .0008 INCH BY CROSS SECTION.
- HOLE DIAMETERS APPLY AFTER PLATING.
- FINISHED CONDUCTOR WIDTHS SHALL NOT BE REDUCED FROM THE NOMINAL INDICATED ON THE MASTER PATTERN, BY MORE THAN THE CONDUCTOR THICKNESS.
- MINIMUM DESIGN LINE WIDTH IS .008 INCH.
- MINIMUM DESIGN SPACING IS .007 INCH.
- IF PAD SIZES PROVIDED ARE NOT LARGE ENOUGH TO MAINTAIN ANNULAR RING REQUIREMENT, MFGR. MAY REQUEST APPROVAL TO TEAR DROP PADS TO MAINTAIN ANNULAR RING. (AT PAD TO TRACE INTERSECTION ONLY AND ELECTRICAL INTEGRITY MUST BE MAINTAINED.)
- THIEVING MAY BE ADDED TO COMPENSATE FOR LOW COPPER DENSITY AREAS ON THIS DESIGN ONLY AFTER REVIEW AND APPROVAL FROM THE CUSTOMER:
 - THIEVING TO CARD EDGE, FIDUCIALS, NON-PLATED THROUGH HOLES, ALL OTHER FEATURES TO BE 0.200 INCH MINIMUM.
 - THERE SHALL BE NO THIEVING IN ANY AREAS FREE OF SOLDER MASK OR INTERNAL COPPER PLANES.
- MFGR. TO LEGIBLY ETCH OR STAMP/SCREEN WITH PERMANENT NON-CONDUCTIVE INK ON SECONDARY SIDE IN A CLEAR AREA UNLESS OTHERWISE INDICATED;
 - U.L. CODE-FLAMMABILITY RATING
 - DATE CODE (STAMP).
 - LOT NUMBER
 - MFGR LOGO
 - SUCCESSFUL ELECTRICAL TEST.
- REPAIRS PER IPC-7711/21 (LATEST REV.) ARE ALLOWED. ~~REPAIRS ARE NOT ALLOWED IN ANY AREA DEFINED ON GOLD_PRM AND/OR GOLD_SEC ARTWORK LAYERS WHEN PROVIDED IN GERBER OR ODB++ DATA.~~
- THRU VIAS FILLED WITH NON-CONDUCTIVE EPOXY AND PLATED OVER.
- BOARDS TO BE SHIPPED IN ARRAY AND KEEP INTACT.
- PANELED SOLDER PASTE STENCIL SHOULD BE SENT TO THE CUSTOMER.

4 LAYER STACKUP



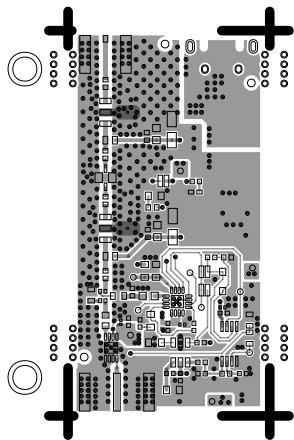
CHARACTERISTIC IMPEDANCE = 50 OHMS CPW +/- 10%
ARTWORK LINE WIDTH FOR
IMPEDANCE CONTROLLED LINES = 0.025" REFERENCE TO LAYER 2

PRIMARY SIDE

		ANALOG DEVICES		WWM DIVISION 804 WOBURN STREET WILMINGTON, MA 01887	
SIZE	FSCM NO	DRAWING NUMBER			REV
C	24355	09-058796			G
SCALE 1/1		SHEET 2 OF 2			

CUSTOMER EVALUATION Z

L1 PRIMARY
08-058796-01
REV G



0000
0000

0000
0000

0000
0000

0000
0000
0000

0000
0000

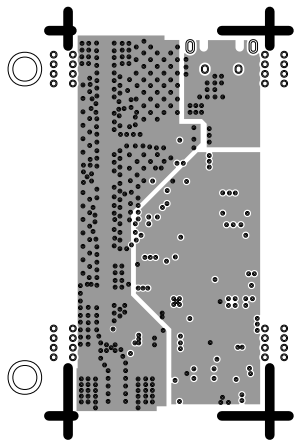
0000
0000

0000
0000

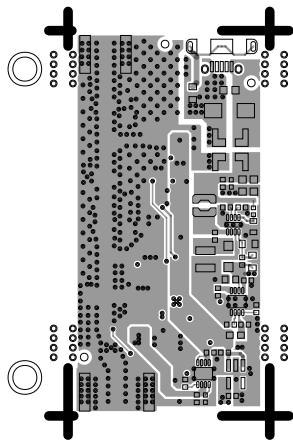
0000
0000
0000



L3 PWR
08-058796-08
REV G



L4 SECONDARY
08-058796-02
REV G



0000
0000

0000
0000

0000
0000

0000
0000

0000
0000

0000
0000

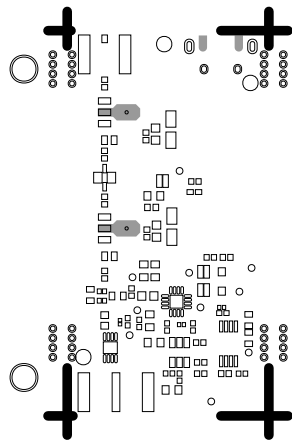
0000
0000

0000
0000

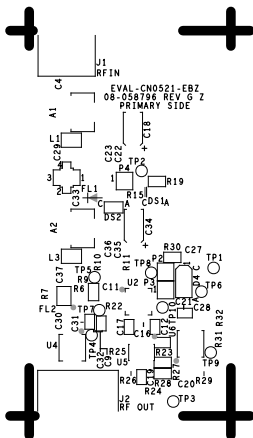
SOLDERMASK PRIMARY

08-058796-04

REV G



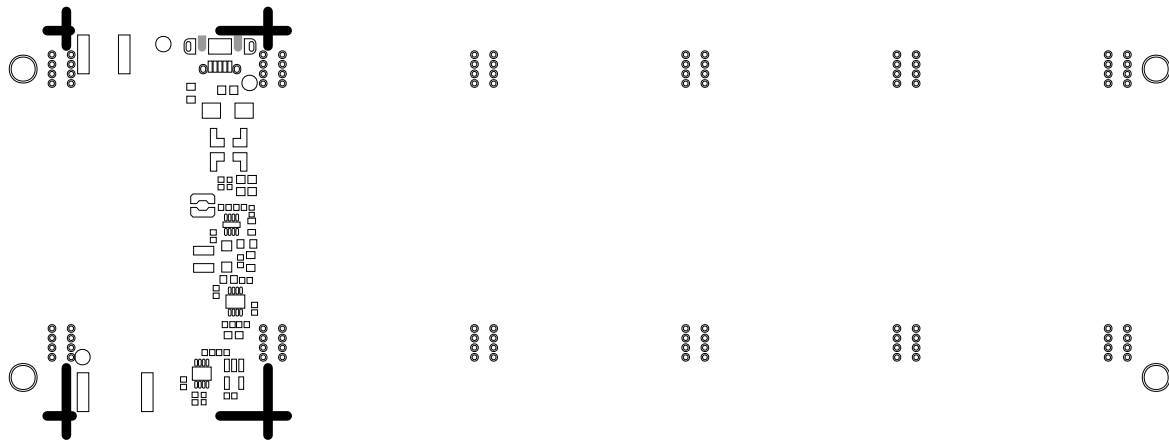
SILKSCREEN PRIMARY
08-058796-03
REV G



SOLDERMASK SECONDARY

08-058796-06

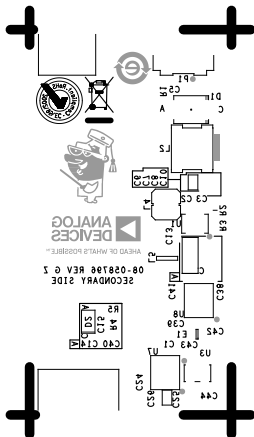
REV G



SILKSCREEN SECONDARY

08-058796-05

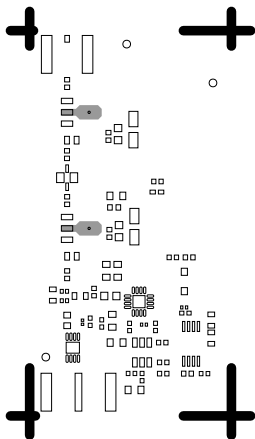
REV G



PASTEMASK PRIMARY

08-058796-09

REV G



PASTEMASK SECONDARY

08-058796-10

REV G

